



**RECOMMENDED GAP WIDTH**

PCB + 10.8 mm (.425 in)

**RECOMMENDED TORQUE**

113 N-cm (10 in-lbs)  
With "L" option 163 N-cm (14 in-lbs)

**WEIGHT**

2.70 g/cm (.241 oz/in)

**MATERIALS AND FINISH**

**BRACKETS AND WEDGES**

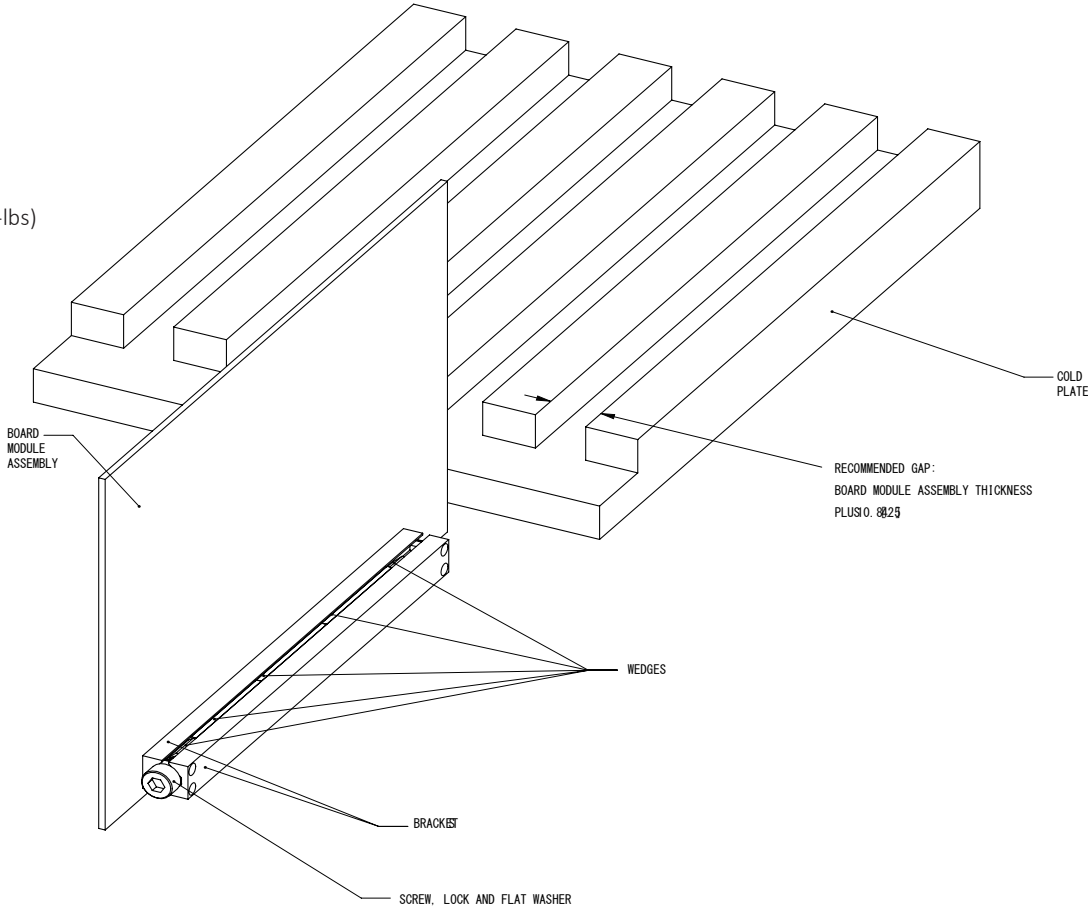
**Material:**  
Aluminum Alloy 6061-T6 per  
per ASTM-B221 or AMS-QQ-  
A-200/8  
**Finish:**  
See finish table on opposite  
page

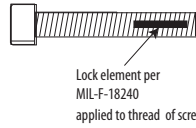
**SCREW, LOCK AND FLAT  
WASHER**

0.09-in. or 2.5-mm hex. socket  
head cap screw, depending on  
mounting configuration  
**Material:**  
Stainless steel  
**Finish:**  
Passivated per AMS2700 and  
dry film lube as required

**ROLLPINS**

**Material:**  
400 series stainless steel  
**Finish:**  
Passivated per AMS2700

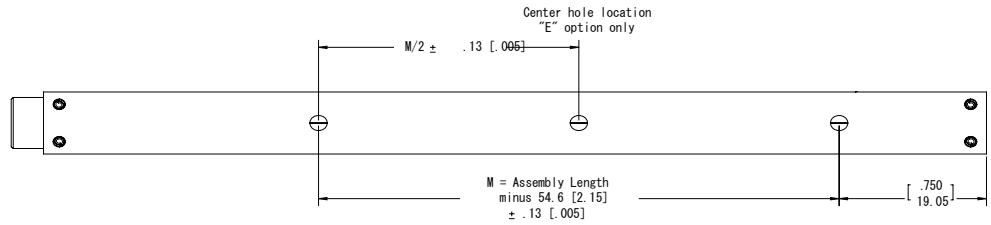
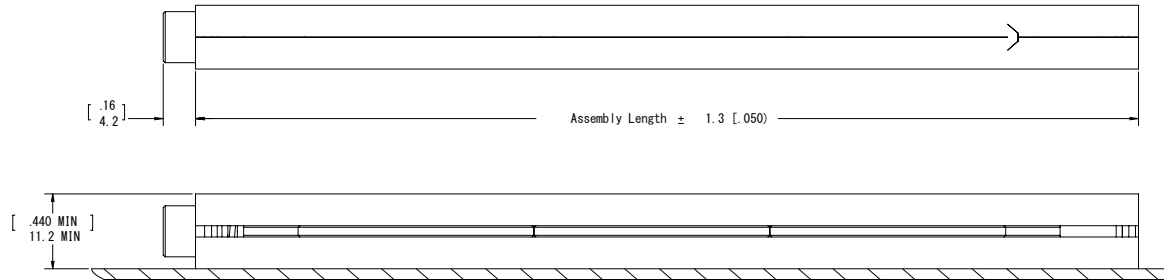
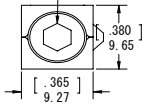




## Detail "L"

Provides prevailing torque for resistance to loosening from shock and vibration.  
Adds 50 N-cm (4 in-lbs) torque to assembly.

3.57 (.140) Hex Socket Cap  
Per ANSI/ASME B18.3



Units: mm [in]  
Unless otherwise specified:  
.xx ± .25, .x ± .5 (.xxx)  
± .010, .xx ± .02) Note: Each  
piece has a tolerance of ± .010

Part Number Code	M	A	280HT	-	3.80	E	T4	L
Screw								
Metric Screw Head M2.5 Hex Drive	M							
Standard Screw Head 3/32 Hex Drive	[Blank]							
Finish								
Black Anodized		A						
Or choose from Finish Table								
Length								
Length in 12.7 (.50) increments					96.52 [3.80]			
					to 325.12 [12.80]			
Mounting								
Additional Center Mounting Hole						E		
None						[Blank]		
Mounting Options - through mounting holes							T4	
Or choose from Mounting Method Table								
Lock Patch								
Lock Patch								L
None								[Blank]

Part Number Code example: A280HT-4.80T4  
Series 280HT Card-Lok five piece 121.9 (4.80) long with black anodize finish, 4-40 tapped hole for mounting.

## FINISH TABLE

CODE LETTER	SURFACE FINISH
"A"	BLACK ANODIZE PER MIL-A-8625 TYPE II, CLASS 2
"HA"	HARD BLACK ANODIZE PER MIL-A-8625 TYPE III, CLASS 2
"EN"	ELECTROLESS NICKEL PER MIL-C-26074 CLASS 4, GRADE B, BRIGHT

## MOUNTING METHOD TABLE

CODE LETTER	METHOD
"T4"	4-40 TAPPED HOLE
"TM3"	M3 x 0.50 TAPPED HOLE

Pentair may modify standard parts without prior notice to or approval from customers. These modifications may change product appearance, but will not have a detrimental effect on form, fit or function.