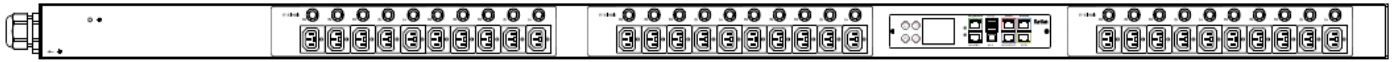


Technical Specifications / Engineering Submittals

Raritan Model Number: PX3-1833JV-E2F8

rev20230817

LINE DRAWING



FEATURES

| | |
|-------------------------------------|------------------------------------------------------------------------------------------------------------------------------------------------------------------------------------------------|
| Energy Metering | Voltage (V), Current (A), Active Power (kW), Real Power (kVA), Energy (kWh), Power Factor |
| Metering Accuracy | ISO/IEC 62053-21 1% (see page 3 for details) |
| Metering per Input Line | Yes |
| Metering per Branch Circuit Breaker | Yes |
| Metering per Output Receptacle | No |
| Remote Outlet Switching | No |
| Environmental Sensor Ready | Yes |
| Replaceable Controller | Yes |
| Compatible Sensors | Temperature, Humidity, Air Flow, Differential Pressure, Water Leak, and Contact Closure |
| Networking | Gigabit (10/100/1000 BaseT) Ethernet port; secondary, redundant (10/100/1000 BaseT) Ethernet port. Optional WiFi (802.11a/b/g/n) |
| Remote Management | HTTP(s); SSH; Telnet; RS-232 (Serial); Power IQ; SNMP version v2/v3; SMTP; JSON-RPC; Modbus over TCP |
| Cascading | Yes, Max 16 PDUs can be daisy chained using a single Ethernet or USB connection |
| Onboard Display | Color, matrix LCD display : Voltage, current, or active power (per line or per breaker); Alarms; Configuration information (name, ratings, IP / Networking information); Auto-flip orientation |
| Embedded Processor | ARM Cortex A5 536MHZ (Atmel A5D35A), 16MB SPI Flash, 64MB DDR2 RAM |

Technical Specifications / Engineering Submittals

Raritan Model Number: PX3-1833JV-E2F8

rev20230817

INPUT

| | |
|-----------------------|--------------------------------|
| Input Plug | NEMA L6-30P (2P3W) |
| Cord Length | 3 meters (9.84 feet) standard |
| Cord Entry | Bottom-bottom feed |
| Cable Type | IP44("splashproof") |
| Number of Power Cords | 1 |
| Maximum Input Current | 30A |
| Nominal Input Voltage | 200V |
| Rated Input Voltage | 200 - 200V |
| Input Frequency | 50/60Hz |
| Power Capacity | 6.0kVA at 200V, 6.0kVA at 200V |

OUTPUT

| | |
|----------------------------------|--------------------------------|
| Nominal Output Voltage | 200V |
| Rated Output Voltage | 200 - 200V |
| Receptacles (Output Connections) | (30) IEC60320 C13 Locking, 10A |
| Securelock Support | Yes |
| Cord Retention | No |
| Overload Protection | (30) RFMB-10 |

PHYSICAL

| | |
|-----------------------------|-------------------------------------------------|
| Color | Black powder coat (custom colors available) |
| Unit Dimensions (WxDxH) | 2.8" x 2.4" x 70.1" ; 70mm x 60mm x 1780mm |
| Unit Weight | TBD |
| Shipping Weight | TBD |
| Shipping Dimensions (WxDxH) | 27.17" x 6.3" x 83.07" ; 690mm x 160mm x 2110mm |
| Mounting | Tool-less button mount |

Technical Specifications / Engineering Submittals

Raritan Model Number: PX3-1833JV-E2F8

rev20230817

ENVIRONMENTAL

| | |
|-----------------------------|-----------|
| Operating Temperature | 60°C |
| Operating Relative Humidity | 85% |
| Operating Elevation | 0-10000ft |

CONFORMANCE

| | |
|----------------------|--------------------------------------------------------------------------|
| Regulatory Approvals | PSE, Canada ICES-003, Part 15 Class A of the FCC rules RoHS compliant |
| Warranty | Standard 2 years manufacturer warranty |

ACCURACY

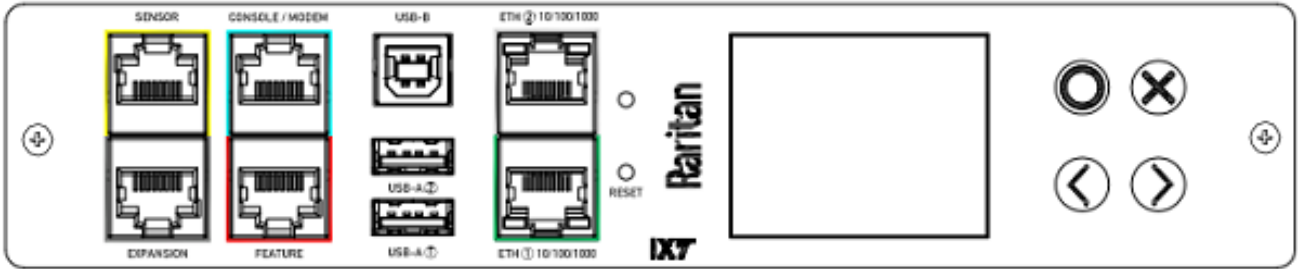
| | Input Measurement |
|---------------------------|---------------------------|
| LCD & GUI Current | ±1% at 0.1 A resolution |
| Voltage | ±1% at 0.1 V resolution |
| Active Power | ±1% at 1 W resolution |
| Apparent Power | ±1% at 1 VA resolution |
| Power Factor | ±1% at 0.1 resolution |
| Active Energy | ±1% at 0.1 kWh resolution |
| Branch Measurement | |
| Current | ±1% at 0.1 A resolution |

Technical Specifications / Engineering Submittals

Raritan Model Number: PX3-1833JV-E2F8

rev20230817

CONTROL PANEL

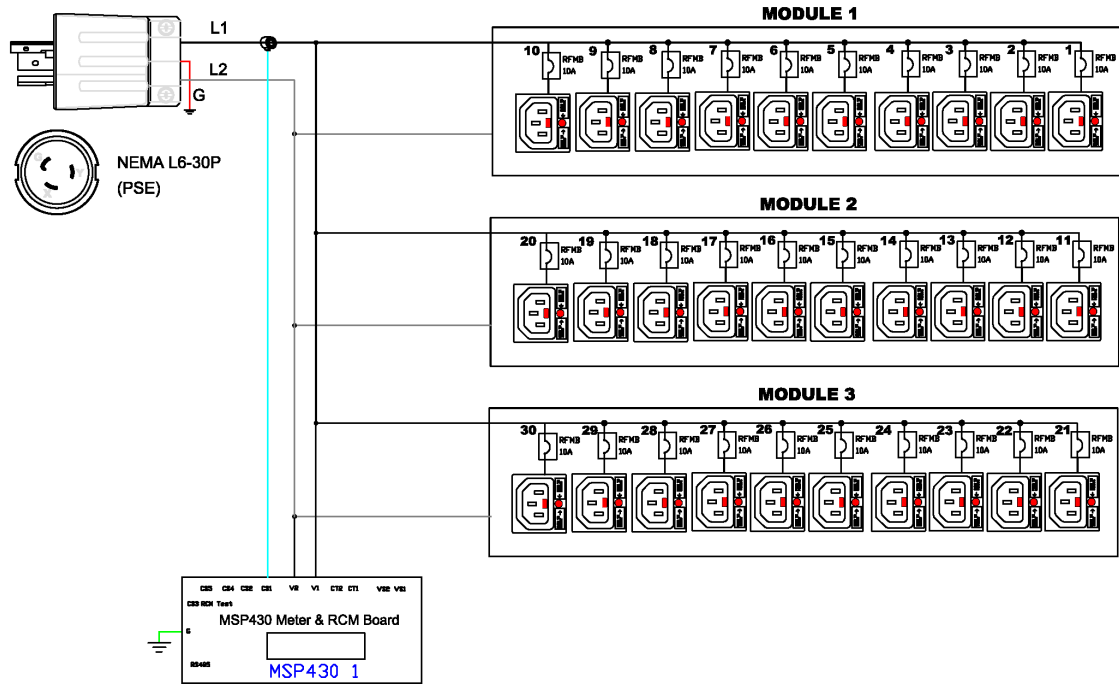


Technical Specifications / Engineering Submittals

Raritan Model Number: PX3-1833JV-E2F8

rev20230817

ELECTRICAL (ONE LINE) DIAGRAM



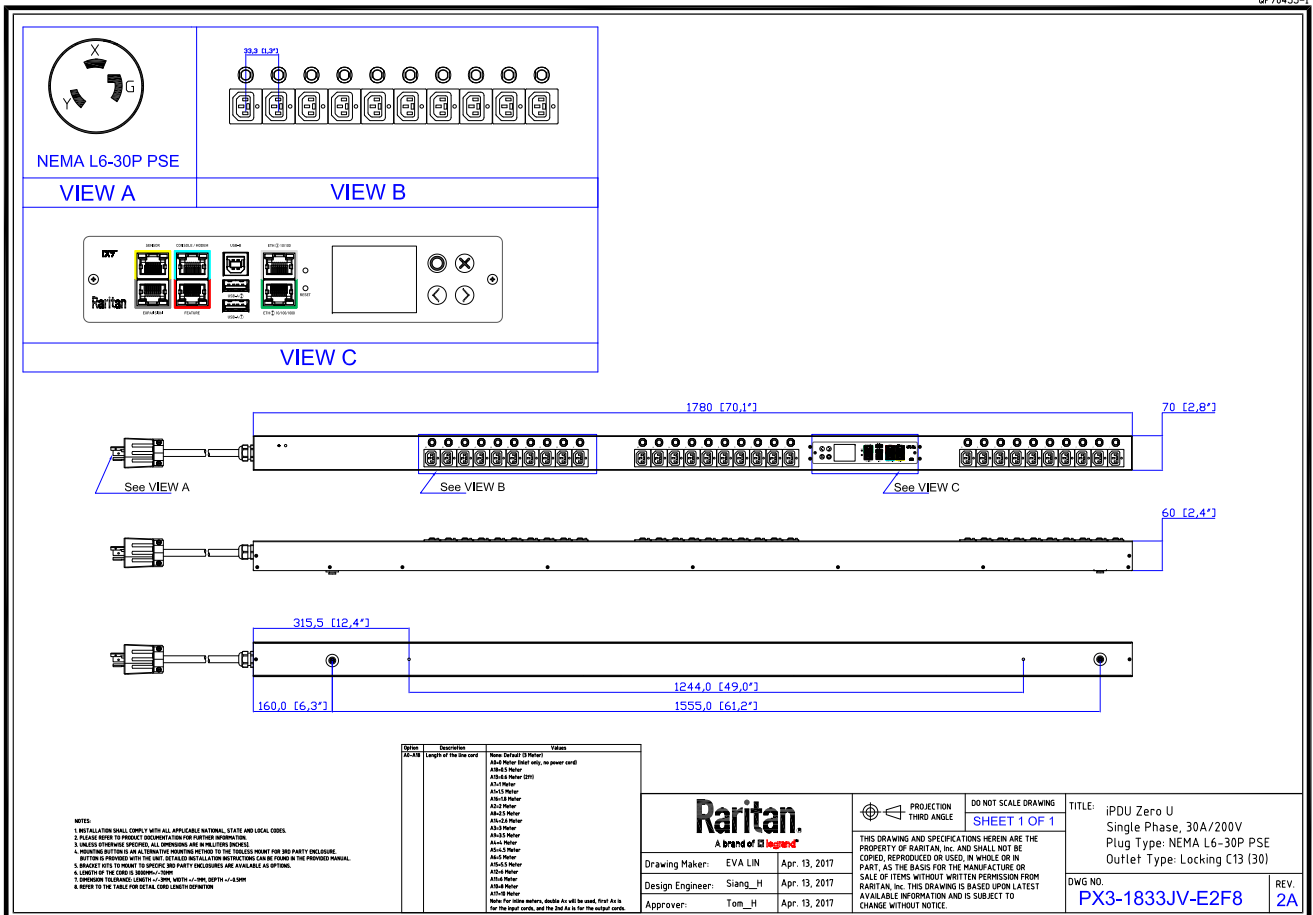
Technical Specifications / Engineering Submittals

Raritan Model Number: PX3-1833JV-E2F8

rev20230817

MECHANICAL DIAGRAM

DF 70455-1



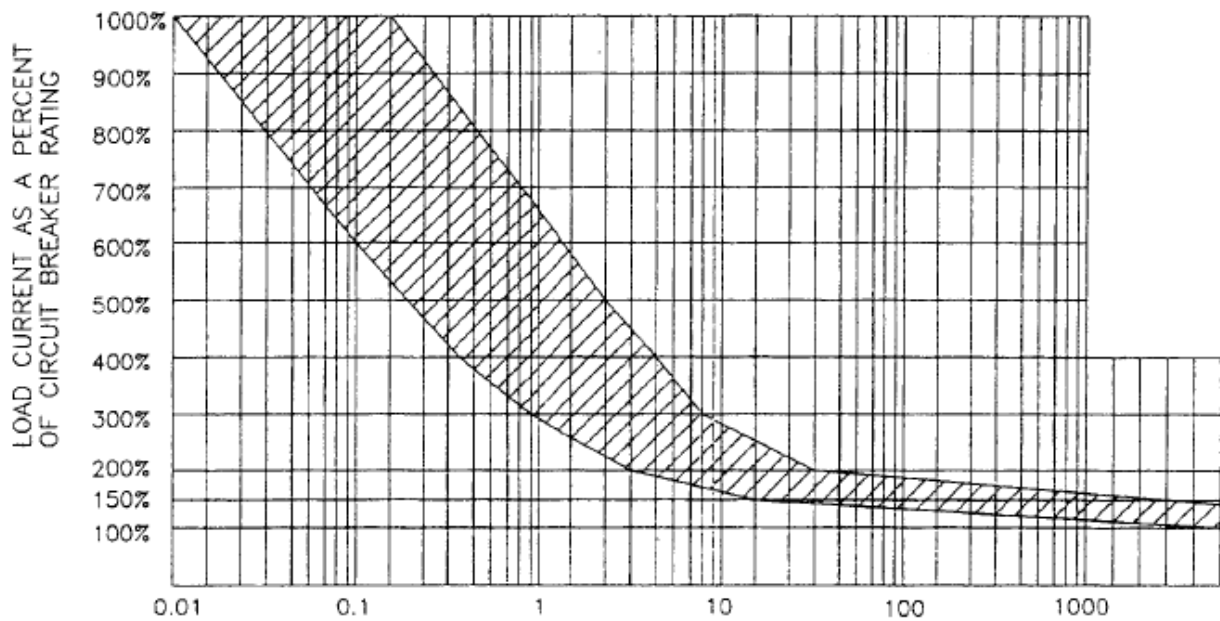
Technical Specifications / Engineering Submittals

Raritan Model Number: PX3-1833JV-E2F8

rev20230817

TRIP CURVE

Trip Curves



| TRIP TIME FACTOR | |
|------------------|-------|
| -10°C | X1.70 |
| -5°C | X1.60 |
| 0°C | X1.50 |
| 5°C | X1.40 |
| 10°C | X1.30 |
| 15°C | X1.20 |
| 20°C | X1.10 |
| 25°C | X1.00 |

| TRIP TIME FACTOR | |
|------------------|-------|
| 30°C | X0.90 |
| 35°C | X0.85 |
| 40°C | X0.80 |
| 45°C | X0.75 |
| 50°C | X0.70 |
| 55°C | X0.65 |
| 60°C | X0.60 |

| OVERLOAD | TRIP TIME |
|----------|--------------|
| 100 % | NO TRIP |
| 150 % | TRIP IN 1 HR |
| 200 % | 4.0~40 sec |
| 300 % | 0.9~8.0 sec |
| 400 % | 0.42~5.0 sec |
| 500 % | 0.25~3.0 sec |
| 600 % | 0.1~1.8 sec |